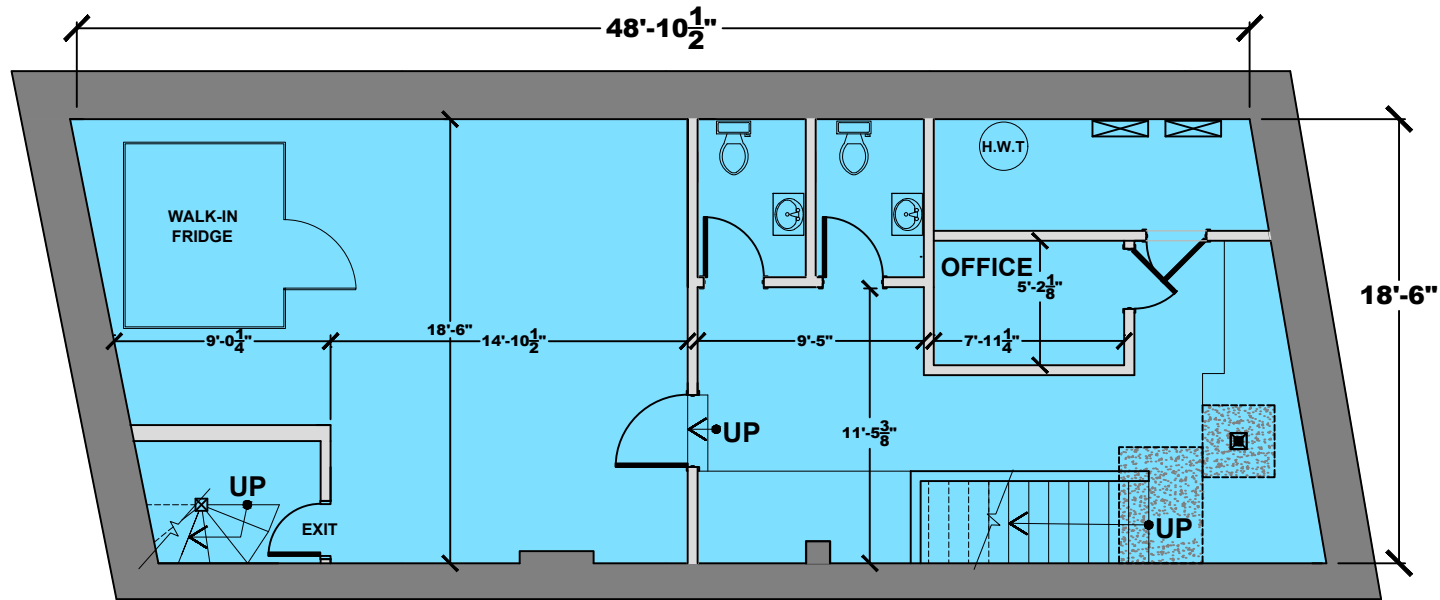


S T - M A R T I N



N O T R E D A M E W E S T

## MEATBALL HOUSE

1752 NOTRE DAME WEST

CEILING HEIGHT	-----
<b>LEASABLE AREA</b>	<b>903 ft<sup>2</sup></b>



133 DE LA COMMUNE O. S-300  
 MONTRÉAL, QC  
 H2Y 2C7  
 514-256-5050

**SHILLER LAVY REALTIES**

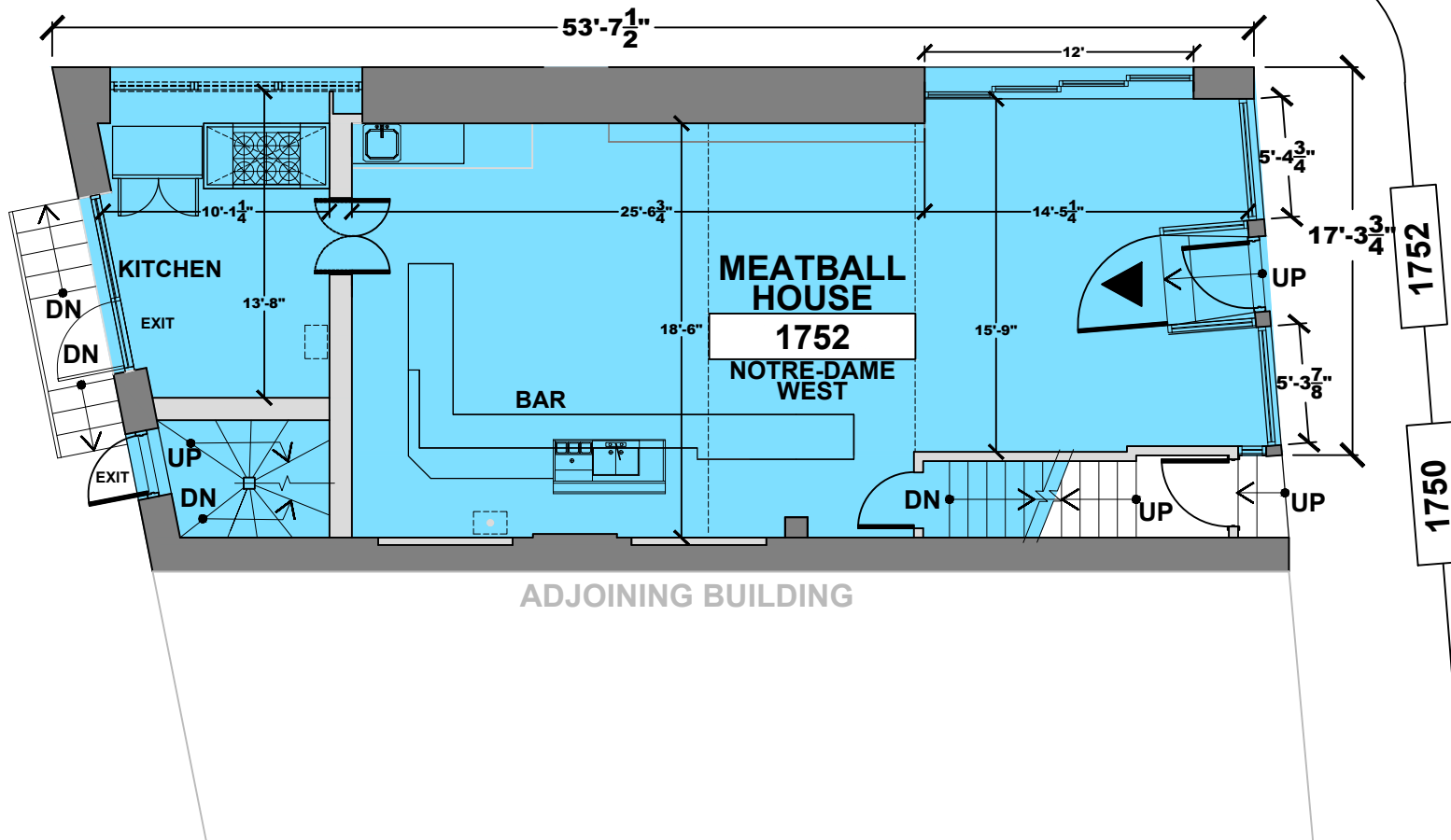
**SULO PROPERTIES INC.**



## B A S E M E N T

DATE (Y.M.D)	SCALE @ LEGAL	BUILDING
2017-04-08	1/8" = 1'-0"	0119

S T - M A R T I N



N O T R E - D A M E W .

1752  
1750

## MEATBALL HOUSE

### 1752 NOTRE DAME WEST

CEILING HEIGHT	-----
<b>LEASABLE AREA</b>	<b>1,118 ft<sup>2</sup></b>

**Shiller Lavy**  
IMMEUBLES REALTIES

133 DE LA COMMUNE O. S-300  
MONTREAL, QC  
H2Y 2C7  
514-256-5050

**SHILLER LAVY REALTIES**

**SULO PROPERTIES INC.**

**GROUND FLOOR**

DATE (Y.M.D)	SCALE @ LEGAL	BUILDING
2017-04-08	1/8" = 1'-0"	0119